

Connecting to OpenVPN Access Server using the Connect Client on Windows

To connect to the OpenVPN Access Server using the Connect Client you will need to navigate to the Connect Client for your particular access server.

I&E Systems OpenVPN SSL Access Server

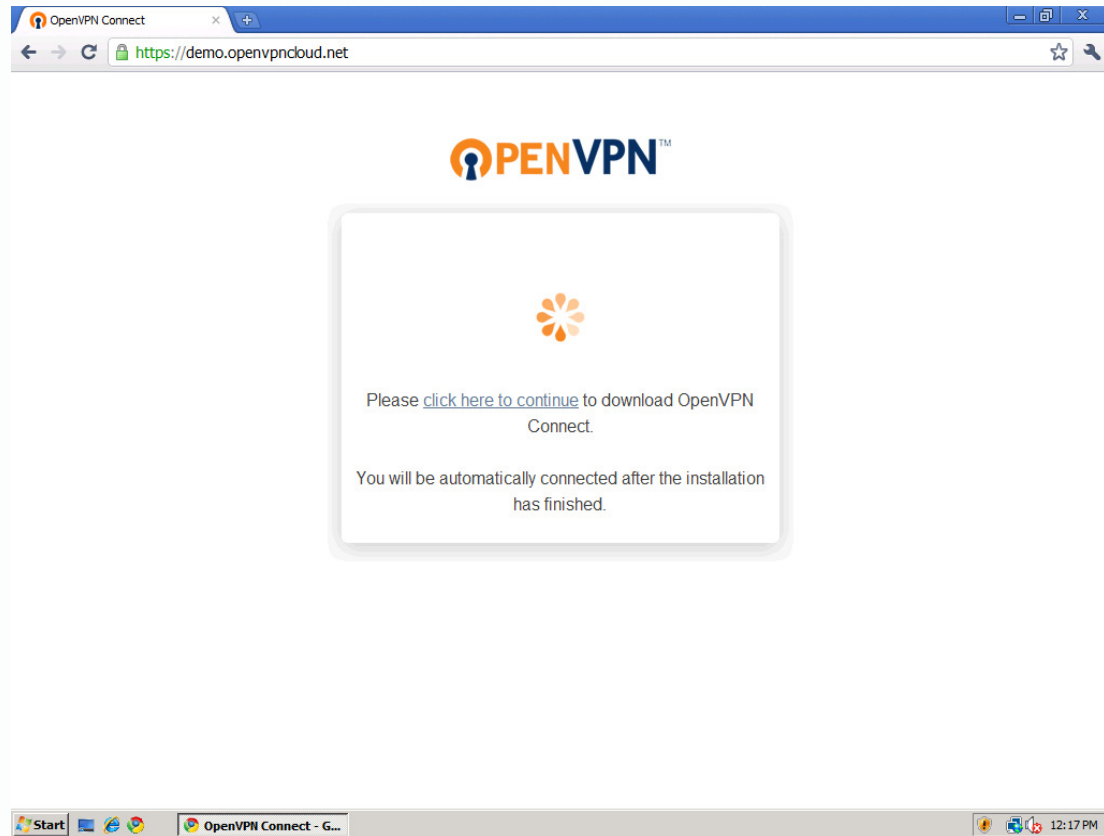
<https://openvpn.iesystems.com.au>

Once you are on the main page of the Connect Client you can go ahead and login with your user credentials:

Simply use your I&E Systems username and password to connect.

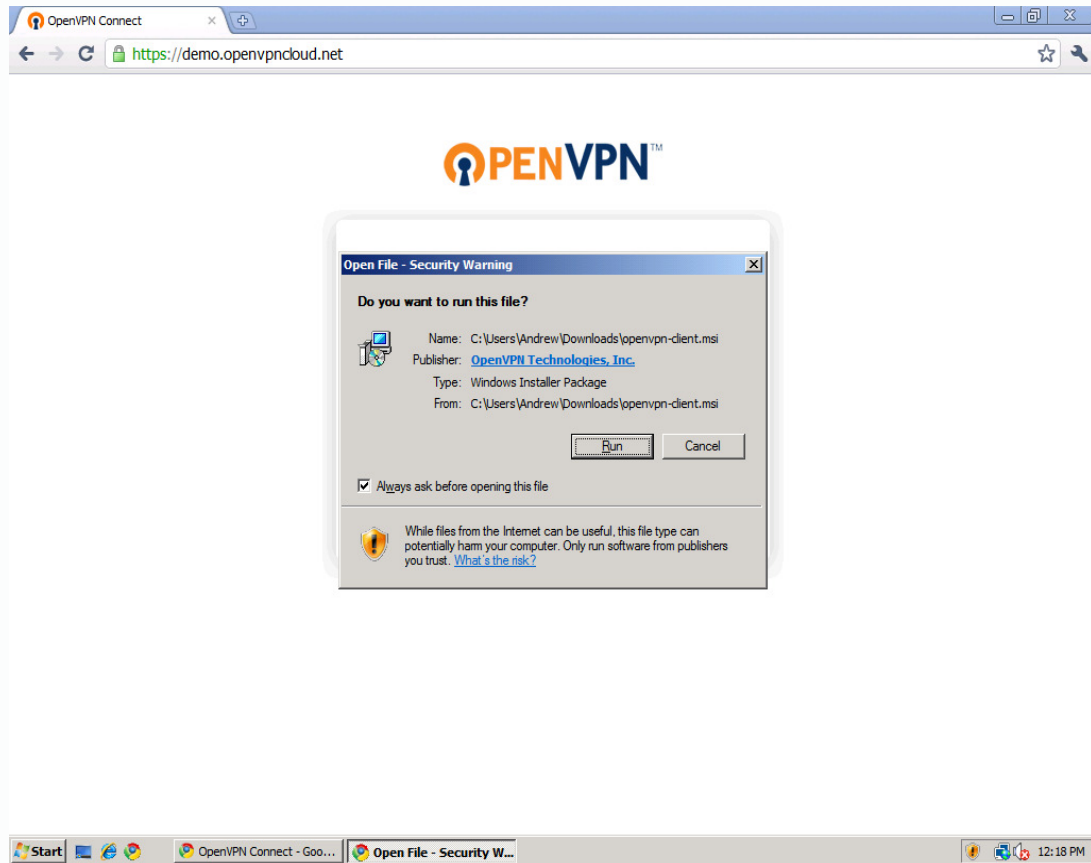


After entering your credentials you will see a new page that prompts you to download the installer.

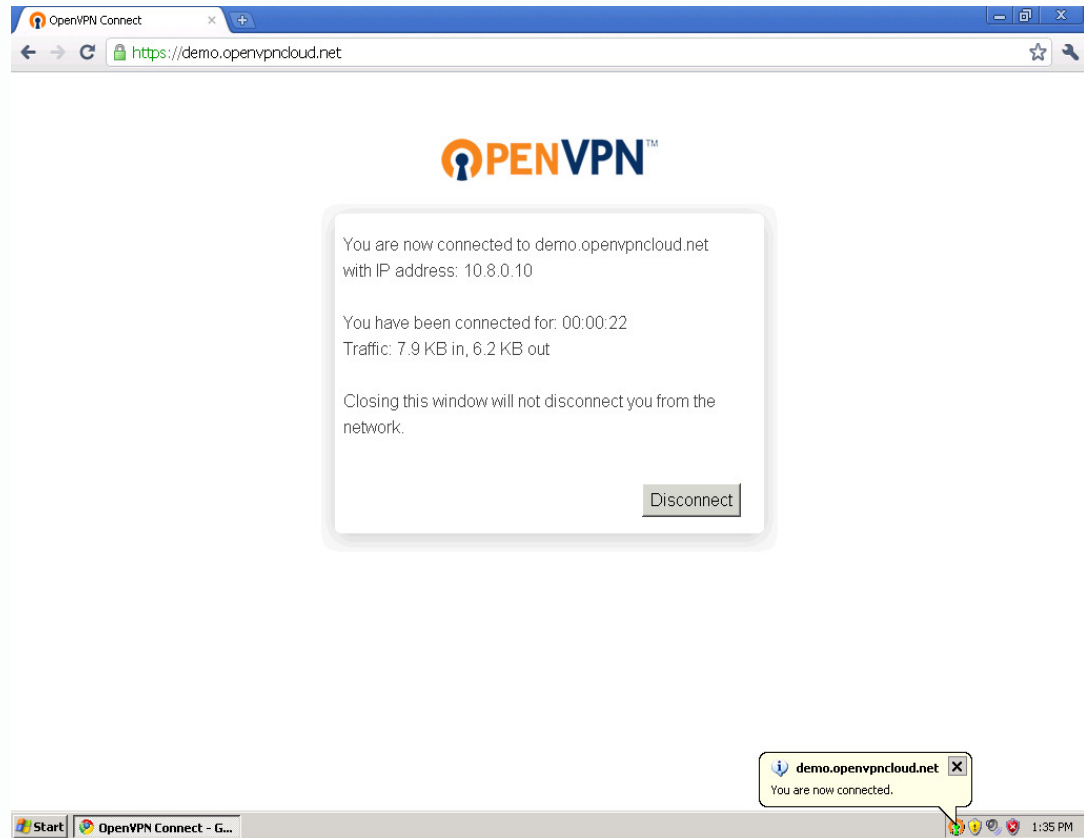


Click on the *click here to continue* link to install the browser plugin.

After downloading the installer, run the installer by clicking the *Run* button.



After running the installer the Connect Client will connect to the OpenVPN Access Server and show the status dialogue as below



A status icon will appear in your system tray as follows:

VPN Connected 

VPN Disconnected 

Disconnecting your VPN Session

Right click on the system tray icon and click *Disconnect* to disconnect your current session.

Re-connecting your VPN Session

Right click on the system tray icon and click *Go to openvpn.iesystems.com.au* to open the login web page.